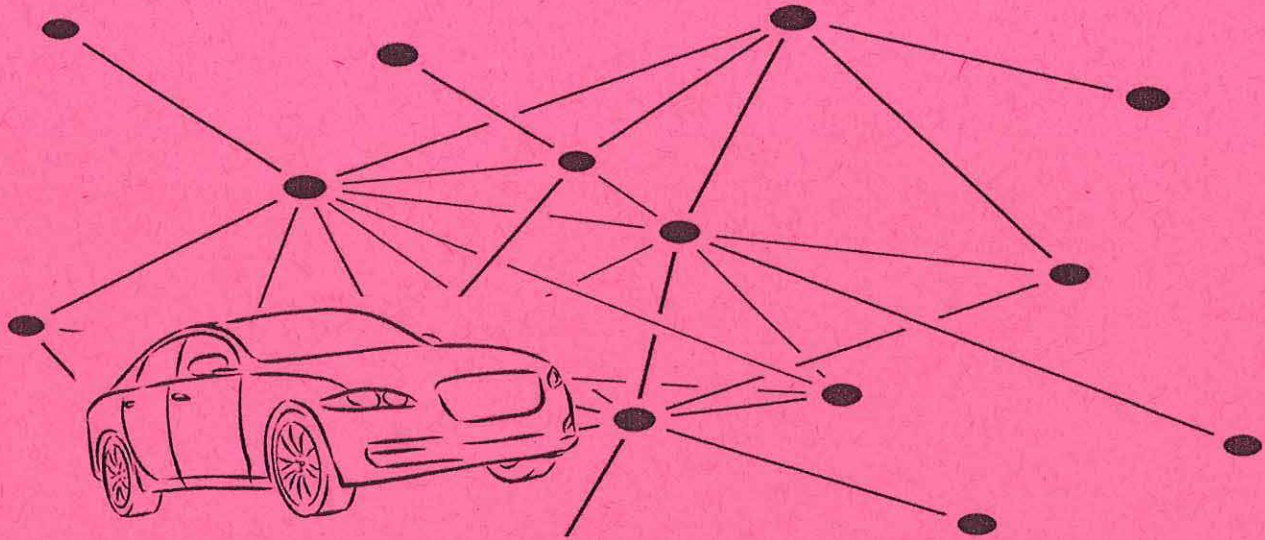




**BERGEN** NEW JERSEY  
*County*



## **RIDE CONNECT PROGRAM**

**A Bergen County Age-Friendly Initiative**

The "Ride Connect" program is designed to simplify the process by which seniors request transportation when calling Bergen County Community Transportation.

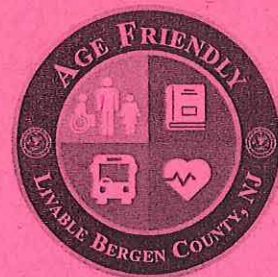
"Ride Connect" provides Bergen County residents, aged 60 and over, a one-stop travel information and trip planning service, provided by a Mobility Manager, to help seniors find information on available transportation options to senior centers, medical appointments, shopping, etc.

The process is simple. The Community Transportation operator works with the Mobility Manager to help seniors connect with the most accessible, reliable, and affordable option for their transportation needs. Options include County shuttles, local town buses, EZ Ride, NJ Transit, AccessLink (if eligible) and more.

**To request this service, call the  
Bergen County Division of Community  
Transportation**

**Monday to Friday, 9am to 2pm**

**(201) 368-5955**



**James J. Tedesco III**  
*Bergen County Executive*

**Board of County Commissioners**

Thomas J. Sullivan, *Chairman* · Germaine M. Ortiz, *Vice Chairwoman* · Dr. Joan M. Voss, *Chair Pro Tempore*  
Mary J. Amoroso · Rafael Marte · Steven Tanelli · Tracy Silna Zur